

OWN A HOME

On Beautiful West Sixteenth Street



Look at the beautiful landscape shown in the above picture. Ten years ago lots in this Subdivision were sold at \$250.00. Now they are selling at \$1500. It's Schilling's way of making his subdivisions attractive to the best class of home-lovers.

Another fact worthy of consideration: This street leads to a new subdivision which will be on the market next week. Like all the Schilling subdivisions, it will have a special appeal to those seeking home sites. The new subdivision is named

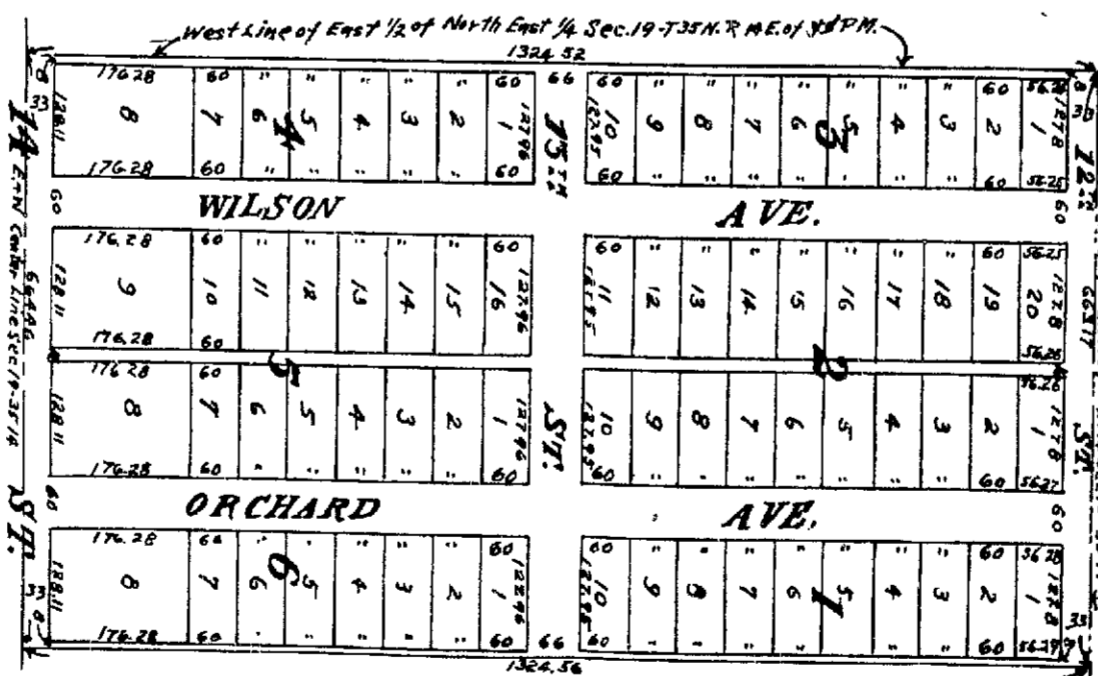
SCHILLING HIGHLANDS

SCHILLING HAS HOUSES AND LOTS IN THESE SUBDIVISIONS FOR SALE AT ATTRACTIVE PRICES

LINCOLN HIGHWAY SUBDIVISION

Is now open and lots are offered to the public. A plat of the ground is shown below. It adjoins the McEl-downey subdivision, and lots are on sale at \$250 and up. Come in early and make your selection. You cannot go wrong in making a real estate investment, especially if you make it through Schilling. FIFTEEN YEARS OF EXPERIENCE PROVES THE TRUTH OF THIS ASSERTION.

SCHILLING has earned a reputation for fair and square dealing. Ask his patrons. Every representation of his regarding his properties and terms can be relied upon implicitly. Talk with him if you are looking for a home investment. :- :-



SCHILLING is a pioneer subdivision builder in Chicago Heights, and there is no retrogression where he plants his stakes. Look over his properties, and you can find what you want in the way of a home, or site for a home. :- :- :-

LOTS AND HOMES ON EASY TERMS

Will Build for You if Desired

Corner Otto Blvd.
and Sixteenth St.

L. B. SCHILLING

Corner Otto Blvd.
and Sixteenth St.

REAL ESTATE, LOANS AND INSURANCE

TELEPHONE 27

ORB W. RITTER, Office Mgr.